



R-Pharm, Illertissen

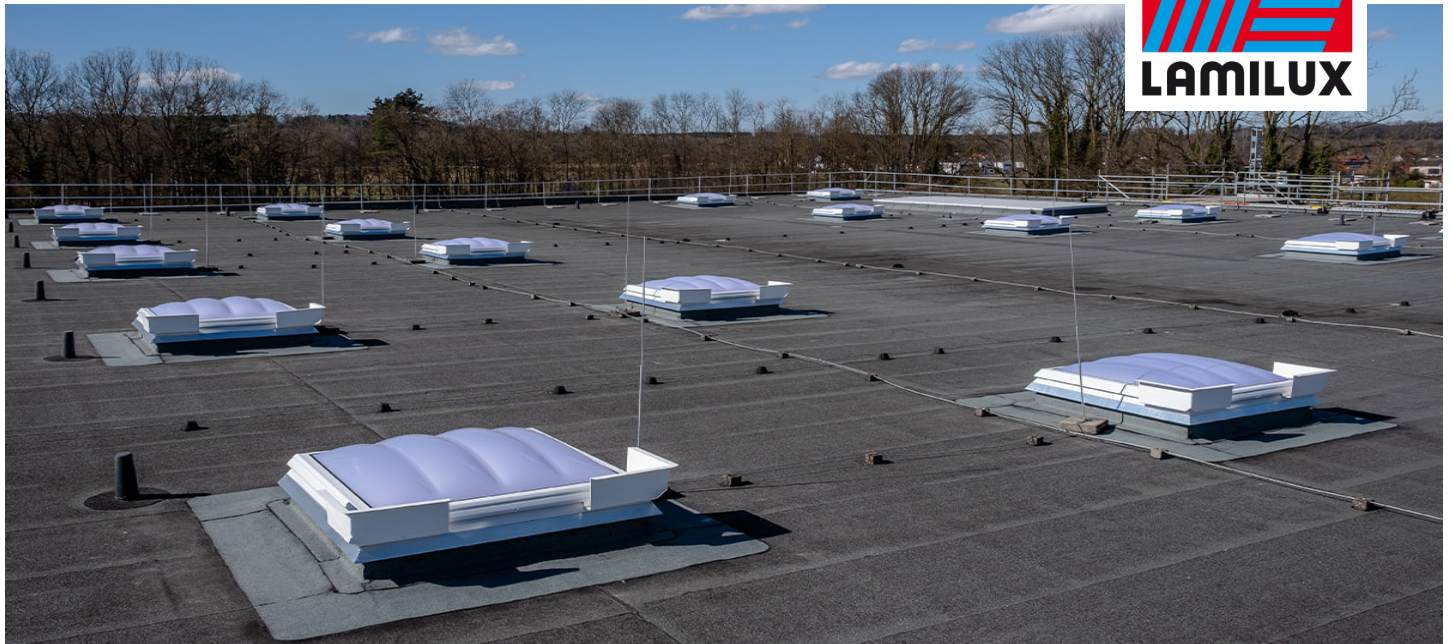
Essential info

Place / Country:	Illertissen, Germany
Year:	2022
Building type:	Industrial hall
Solutions:	LAMILUX Smoke Lift Rooflight F100 W LAMILUX Continuous Rooflight B

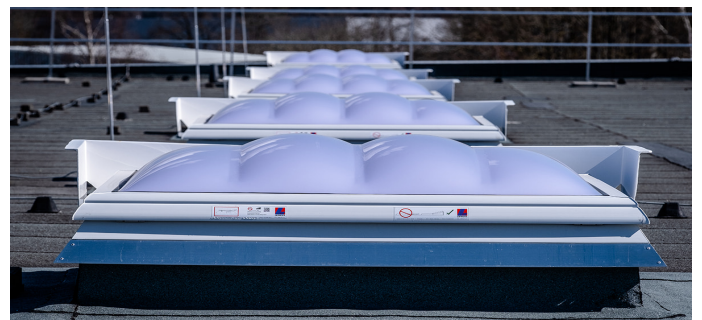
During the renovation of an industrial roof at the R-Pharm company in Illertissen, a total of 23 LAMILUX Smoke Lift Rooflight F100 W with a 150 x 150 cm fall-through protection grid were installed. In addition, a LAMILUX Continuous Rooflight B with a length of 8 metres was installed. After the renovation, the industrial hall is flooded with sufficient daylight, which significantly reduces the need for artificial lighting during the day. In addition, the use of daylight can minimize the need for air conditioning systems, as the natural ventilation helps to regulate the temperature in the hall and thus contributes to reducing energy costs. Reducing energy consumption therefore enables a reduction in environmental impact and supports efforts to operate in a more sustainable manner. The protection of assets in the event of a fire is ensured by the SHEVS function of the installed LAMILUX Smoke Lift Rooflight F100 W. These are automatically triggered in the event of a fire and ensure natural smoke extraction.

Reference

CI-System Glaselement F



R-Pharm, Illertissen



LAMILUX HEINRICH STRUNZ GMBH

POB 1540 - 95105 Rehau/Germany - Phone: +49 (0)9283/595-0 - Fax: +49 (0)9283/595-290

E-Mail: information@lamilux.com - www.lamilux.com