

# Reference

CI System Glass Architecture PR60



Zoo, Neuwied (Germany)

## Essential info

Place / country:	Neuwied, Germany
Year:	2016
Building type:	Zoo
Solutions:	Glass Roof PR60

In 2016, a 304m<sup>2</sup> PR60 glass construction was installed on a roof in Neuwied Zoo. This has a width and a length of 16.14m each. The pyramid-shaped construction has a surface inclination of 27°. In addition, 8 pieces of the LAMILUX Smoke Lift Glass Roof PR60, SHEV pneumatic cylinder and a wind and rain sensor set were installed.

**LAMILUX HEINRICH STRUNZ GMBH**

POB 1540 - 95105 Rehau/Germany - Phone: +49 (0)9283/595-0 - Fax: +49 (0)9283/595-290

E-Mail: [information@lamilux.com](mailto:information@lamilux.com) - [www.lamilux.com](http://www.lamilux.com)

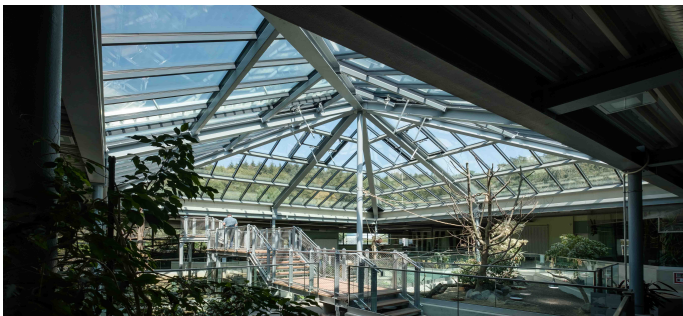
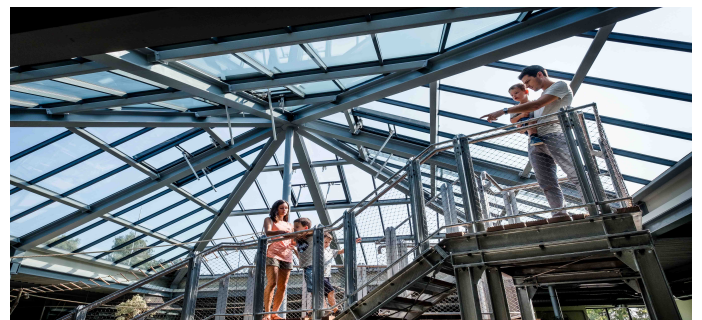


# Reference

CI System Glass Architecture PR60



Zoo, Neuwied (Germany)



**LAMILUX HEINRICH STRUNZ GMBH**

POB 1540 - 95105 Rehau/Germany - Phone: +49 (0)9283/595-0 - Fax: +49 (0)9283/595-290

E-Mail: [information@lamilux.com](mailto:information@lamilux.com) - [www.lamilux.com](http://www.lamilux.com)