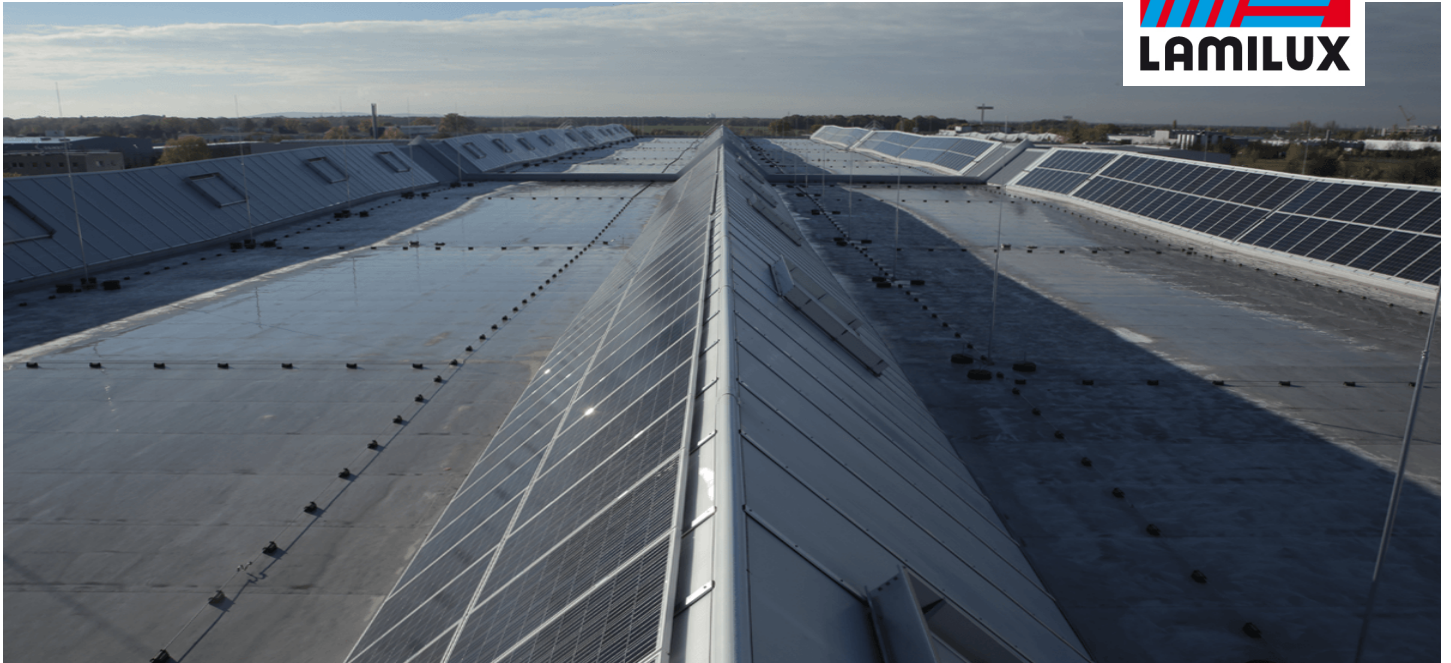


Reference



Logistics Center, Hoppegarten

Essential info

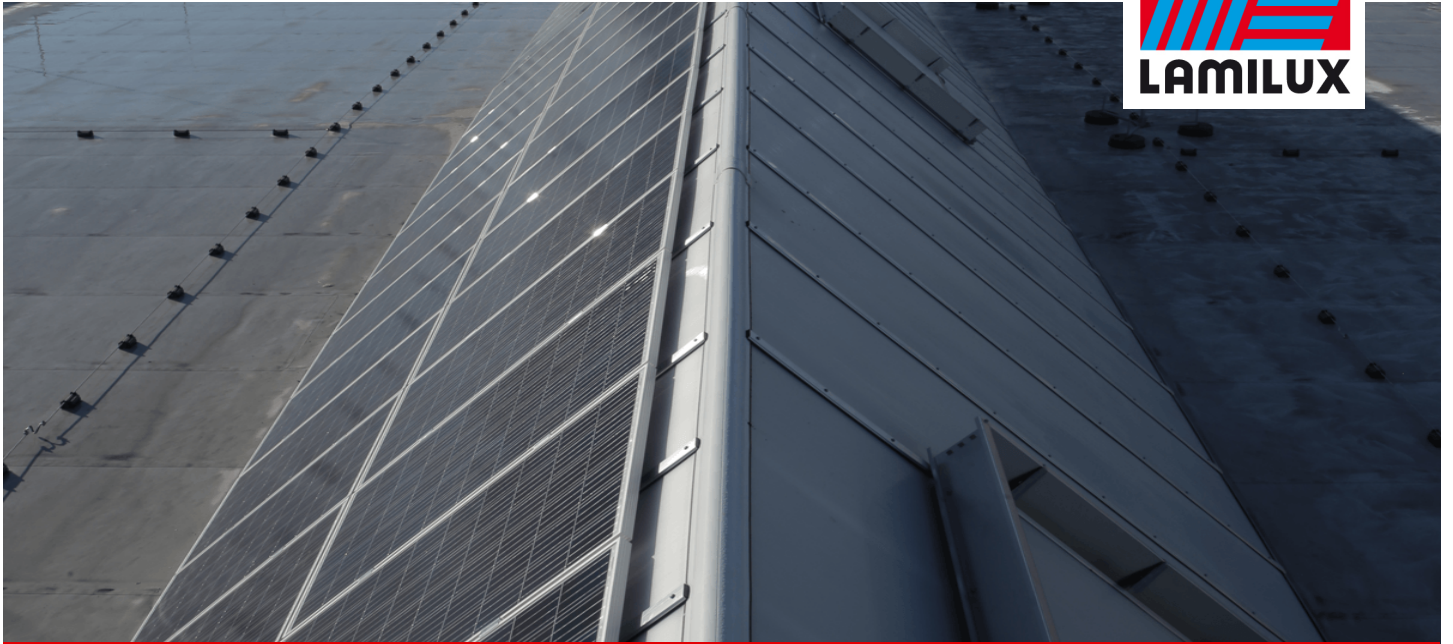
Place / Country:	Hoppegarten, Germany
Year:	2016
Building type:	Warehouse Logistics Center
Solutions:	LAMILUX Continuous Rooflight S SHEV Building Control Systems Photovoltaics

This building project is a logistics center of Rhenus Logistics in Germany. The supporting system of the hall was built as a framework steel construction. This runs partly above the roof. Through the use of our CI System Continuous Rooflight S this framework could be built over and integrated in our construction. Furthermore LAMILUX has established its own system for the integration of a photovoltaic system. The system consists of 660 photovoltaic modules with a total output of 170kWp. The generated electricity is partly consumed by the company itself and the excess electricity will be fed into the local power grid and will be marketed on the electricity exchange.

LAMILUX HEINRICH STRUNZ GMBH

POB 1540 - 95105 Rehau/Germany - Phone: +49 (0)9283/595-0 - Fax: +49 (0)9283/595-290
E-Mail: information@lamilux.com - www.lamilux.com

Reference



Logistics Center, Hoppegarten



LAMILUX HEINRICH STRUNZ GMBH

POB 1540 - 95105 Rehau/Germany - Phone: +49 (0)9283/595-0 - Fax: +49 (0)9283/595-290

E-Mail: information@lamilux.com - www.lamilux.com